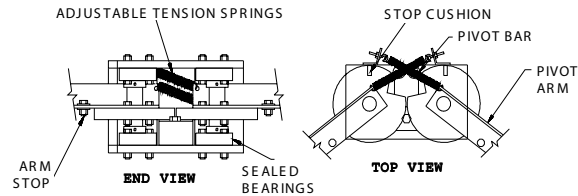


Accessories

Traffic Cops:

Four standard degrees available: 30°, 45°, 90° and 180°
 Overall widths from 24" to 42", please specify. 1" bore, 3 hole sealed bearings. Spring tension adjustment for arms. 250 lb. maximum live load capacity and 5 lb. minimum live load at 60 FPM. Shipping weight 50 lbs.



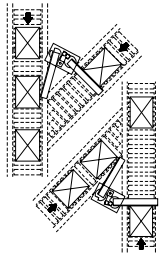
Typical Application:

The traffic cop is used to control the material flow at a point of merger. It operates on a first enter, first exit basis. When a package engages the traffic cop, the traffic from the converging line is blocked until the package clears. This prevents the collision of packages which may cause damage or stop product flow. (See drawing below.)

Pivot Arm Length Chart:

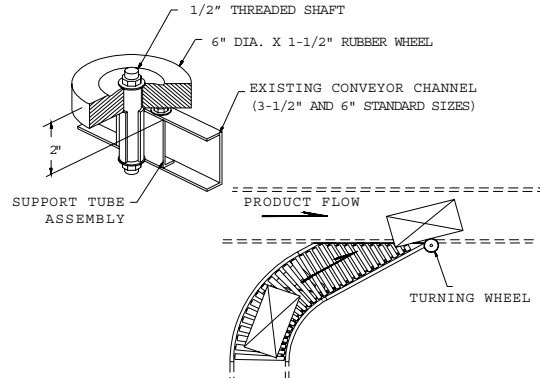
(Chart shows length of one arm.)

Overall Width	Arm Length			
	30°	45°	90°	180°
18"	18-3/4"	22-1/2"	20-1/2"	17"
24"	24-3/4"	28-1/2"	26-1/2"	23"
30"	30-3/4"	34-1/2"	32-1/2"	29"
36"	36-3/4"	40-1/2"	38-1/2"	37"
42"	42-3/4"	46-1/2"	44-1/2"	37"



Turning Wheels:

6" Dia. x 1-1/2" rubber wheel with stamped steel hub, 1/2" threaded shaft, Formed steel support tube assembly, Mounting hardware included.



Typical Application:

Turning wheels are used where packages are converging into a conveyor line. Transfer points are usually 90 degrees or more. The turning wheel permits easy entry of the package from a spur onto a main conveyor. As the package converges onto the conveyor, it contacts the turning wheel and is rolled around in its proper orientation onto the main conveyor. (See drawing.)

For optimum conveying at 30°, roller speed of main conveyor should be 1.2 times that of the spur. For 45° spurs, the speed differential should be 1.4.

Medium Duty "M" Series Supports:

Frame: 12 gauge welded formed steel construction.
 Pivot Plates: 35 degree adjustable standard.
 Floor Anchors: Holes for 1/2" anchor bolts are provided in support feet.



"M" Series

Capacity
1500# Ea.

Height to Top of Conveyor	
Model 26, 35	Weights (Lbs.)
40, 41, 91, 94	
13" - 16"	9#
16" - 19"	11#
19" - 22"	14#
22" - 28"	17#
26" - 32"	19#
* 29" - 41"	23#
40" - 52"	28#
52" - 64"	35#
64" - 76"	40#
76" - 88"	43#
86" - 98"	46#
98" - 110"	49#

*Standard Support Height.

Rod Type Ceiling Hangers

Widths - Widths correspond with width of conveyor ordered.
 Lengths - 10' long fully threaded rod. To be used in place of standard stationary supports.
 Extensions - Rod lengths may be extended using coupling nuts.
 Rods - 5/8" diameter all thread rods.
 Cross Pipe - 1-1/2" diameter pipe.

Poly-Tier Supports:

Capacity - 1500 lbs. per cross member and 3000 lbs. per support.
 Widths - 30" to 48" standard overall widths.
 Heights - Heights from 36" to 84" top of the roller.
 Tiers - Two tiers standard.
 Knee Braces - 10 gauge formed angle steel. One set standard. Installer must field drill for exact fit.

Blade Stops:

Height - 2" from top of roller.
 Widths - Widths correspond with width of conveyor ordered.
 Pneumatic - 115 V., double acting solenoid valve.

Guard Rails:

Vertical and Angle Solid Steel Guard Rails.