

Model 68/69

STANDARD SPECIFICATIONS:

Pallet Turntables



Model 68 - Pallet Turntable

	Model 68	Model 69
Diameter:	6'-10"	
Transition Rollers:	Three 2-1/2 in. dia. x 11 ga. unplated rollers. Transition rollers mounted in 2-1/2 in. x 7 ga. vertical channel at each end of turntable: 3" roller centers.	2-5/8 in. dia. x 7 ga. unplated rollers spaced every 3 inches. Transition rollers mounted in 2-5/8 in. x 7 ga. vertical channel at each end of turntable and are powered. 3" roller centers.
Roller Centers:	4"	
Frame:	4" @ 5.4# and 6" @ 8.2# painted structural steel channel frame. Top of roller is 3/8" above top of 4" channel.	
Roller Bed:	Roller bed with 2-1/2 in. dia. x 11 ga. unplated rollers with 11/16" hex shaft.	2-5/8 in. dia. x 7 ga. unplated rollers with 11/16" hex shaft.
Base:	6'-10" dia. x 3/8" steel plate resting on 6" alathane casters mounted to a 3/8" steel plate.	
Drive:	Side center mounted.	
Drive Chain:	#40	
Chain Guard:	Totally enclosed for increased safety.	
Air Cylinder:	Rodless with 4" bore and 15" stroke.	
Air Requirements:	60 PSI.	
Turntable Stops:	Adjustable shock absorbing.	
Bearings:	Heavy duty grease-packed labyrinth sealed ball bearings.	
Motor:	3/4 HP, 230/460 V., 3 phase, totally enclosed C-faced.	
Speed:	Constant 30 FPM.	
Speed Reduction:	Sealed worm gear C-faced speed reducer.	
Cycle Time:	2 cycles per minute maximum.	
Paint:	Uniflo Dark Blue.	
Electrical:	115 V., double solenoid pneumatic valve.	
Rotation:	90°	
Supports:	15" - 18" measuring from floor to top of roller.	
Capacity:	1000 lbs./ft. live load, 4000 lbs. maximum unit load.	

OPTIONAL EQUIPMENT:

Motors: 1 horsepower.

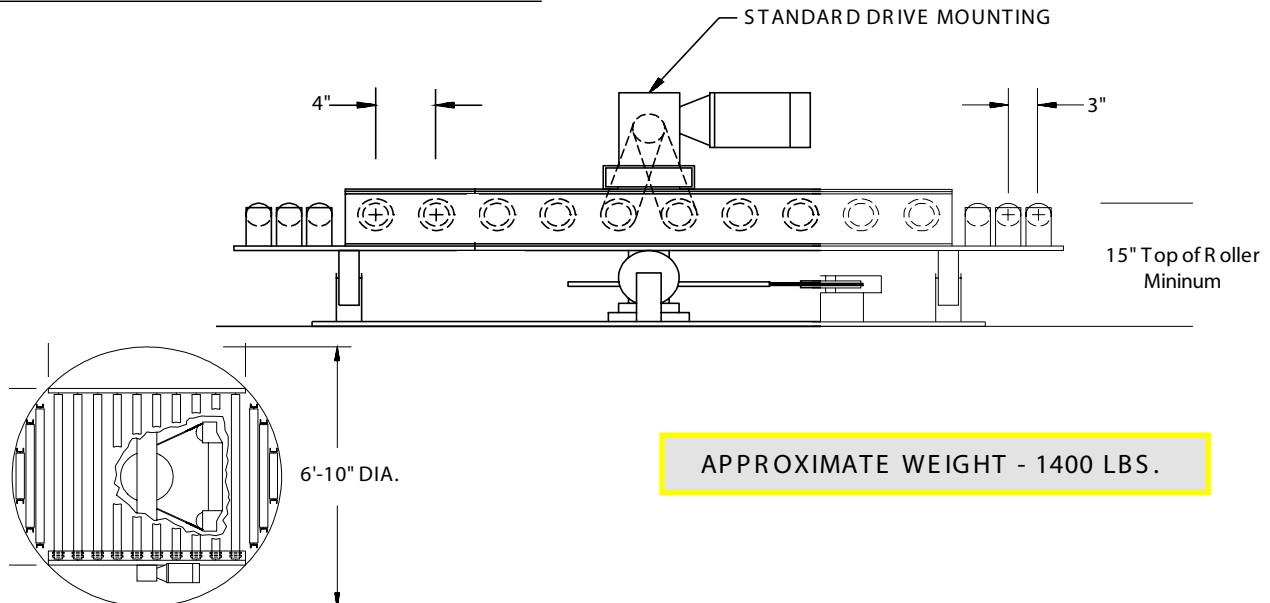
Pneumatic Devices: Filter-regulator-lubricator.

Transition Rollers: Powered.

Guard Rails: See accessories section of this brochure for more details.

Paint: Special colors, powder coat.

STANDARD SPECIFICATION DRAWINGS:

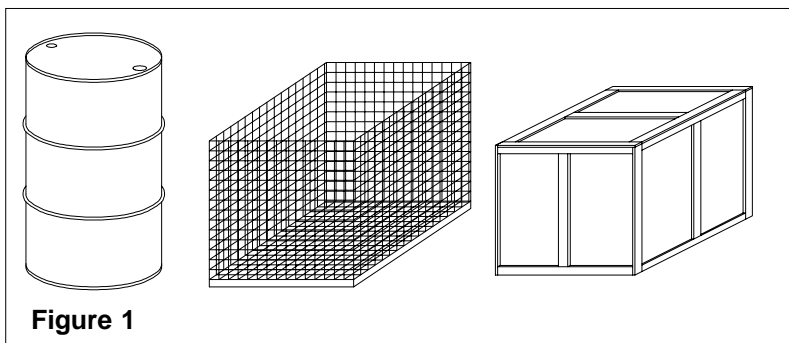


APPROXIMATE WEIGHT - 1400 LBS.

Several types and configurations of loads can be successfully conveyed on conventional Uniflo Technologies heavy duty conveyor equipment. General descriptions of some of these types of loads are listed below. Following each description is the suggested Uniflo Technologies equipment that is, under general conditions, appropriate to handle these types of loads.

1. Unit Loads

Individual unit loads such as cartons, boxes, tote boxes, drums, and containerized loads. (See Figure 1)

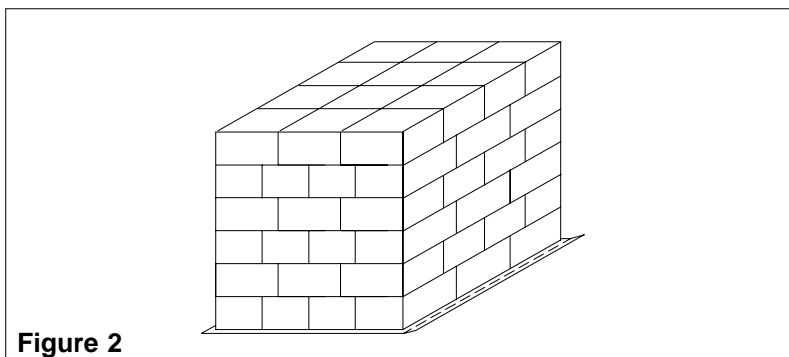


Suggested Equipment

All Uniflo models, except the Model 46 Chain Conveyor, can be applied. The most efficient application for transportation would be Models 48/49. The use of Models 58/59 (straight roller curves) should be restricted to applications where load orientation is not important, such as drum handling. Both in-the-frame and through-the-frame transfers and turntables can be applied. (See Transfers and Turntables Brochure for more details.)

2. Unitized Loads

Groups, stacks and/or patterned layers of unit loads. (See Figure 2)

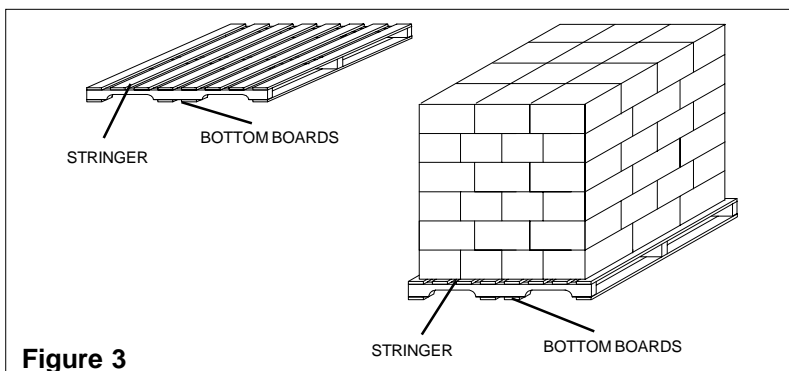


Suggested Equipment

Unless the unit size is very large, the unitized loads should be on a pull sheet. Models 47, 48/49, and 68/69 can be applied when close roll centers are specified. If less than 4" roll centers are required for Models 48/49 and 68/69, it will be necessary to have roll-to-roll chain drives on both sides of the conveyor. This will require a chain box on each side of the conveyor, thus limiting access for loading/unloading and narrowing the effective width of the conveyor.

3. Pallet Loads

Unitized loads or single large unit loads on pallets or plywood sheets. (See Figure 3)



Suggested Equipment

All Uniflo Technologies models can be applied when pallets are in good condition and have bottom boards that are parallel to the direction of travel. In the absence of bottom boards, the pallet stringers must be in the direction of travel. When the bottom boards are at right angles to the direction of flow, Uniflo Technologies Model 46 is preferred. When conveying loads on plywood sheets (sometimes referred to as slave pallets), all Uniflo Technologies models can be applied.